

2024/25



# NORDIC RACE



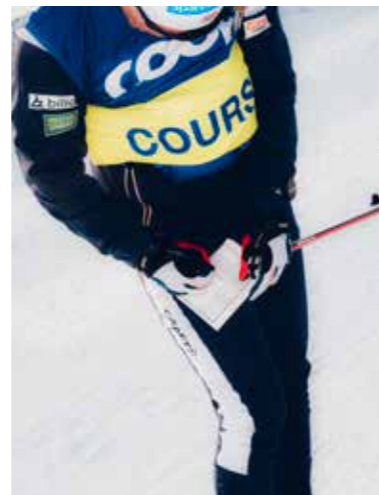
ENGLISH



# REDSTER LEAVING ITS MARKS IN THE NORDIC WORLD

As all eyes turn towards the coming season, we look back on last season's journey with a sense of gratitude. Our athletes stepped up their game, making it an unforgettable year. Consistently strong performances, regular podium appearances, and the emergence of promising talent on display at the Junior and U23 World Championships have solidified Atomic's reputation as a brand to trust.

It's important to remember that our success isn't solely about our athletes; it's also about the dedicated individuals who work tirelessly behind the scenes. These unsung contributors ensure that everything runs smoothly, and we couldn't be more grateful. Together, we stand poised for the upcoming season with a sense of quiet confidence, knowing there's still so much room to grow.



## WORLD CUP 22/23

**1**  
OVERALL WORLD CUP WINNER  
First female Atomic skier to win overall world cup

**23**  
WORLD CUP PODIUMS  
Four times more than 2021/22



## NORDIC WORLD CHAMPIONSHIPS PLANICA

**5**  
GOLD MEDALS

**4**  
SILVER MEDALS

**6**  
BRONZE MEDALS



## JUNIOR AND U23 WORLD CHAMPIONSHIPS

**6**  
GOLD MEDALS

**3**  
SILVER MEDALS

**3**  
BRONZE MEDALS



# REDSTER

REDSTER S9 CARBON



### Explosive power from unrivalled rebound

Our Innowave Core is crafted for strength, lightness and efficiency. Its unique wave pattern and material composition deliver dynamic rebound, so you experience unparalleled responsiveness and power transmission with every push.

### Control and confidence at speed

The new Redster S9 Carbon comes with a more parallel sidecut that dials up steering control at speed. So, no matter how fast the conditions, you can push hard with total confidence.

### Optimized tip for better balance and flow

Little details matter for racing – we've created a shorter, flatter and lighter ski tip, specially designed to enhance your swing balance and allow for a super smooth and fluid motion.

## TECHNICAL SPECIFICATIONS

### RACE

#### REDSTER SKATE



REDSTER S9 CARBON NEW ABSS00482 EXCLUSIVE



REDSTER S9 GEN 5 ABSS00396 EXCLUSIVE



REDSTER S9 NEW ABSS00522 EXCLUSIVE

PRODUCT	ART. NO.	BINDING	SIZES (cm)	WEIGHT SINGLE PC./ SIZE	SIDE CUT(mm)	CONSTR.	BASE	CORE	GRIP	FEATURES	PRICES
REDSTER S9 CARBON	ABSS00482 UNI med	PROLINK SHIFT RACE SK	175, 183, 191								
	ABSS00486 UNI hard	PROLINK SHIFT RACE SK	183, 191	490g / 183cm	42/43/43	Race Carbon Construction	BI 6000 + WC Grinding	Innowave Core	-	Atomic Pro Center Ski Selection, Flat Racing Tip (FRT)	
	ABSS00488 PLUS med	PROLINK SHIFT RACE SK	175, 183, 191								
	ABSS00484 COLD med	PROLINK SHIFT RACE SK	175, 183, 191								
REDSTER S9 GEN 5	ABSS00396 med	PROLINK SHIFT RACE SK	173, 183	550g / 183cm	47/40/47	Speedline, Speedscale, Racewall, Race Carbon Construction	BI 6000 + WC Grinding	Nomex Featherlight Race	-	Atomic Pro Center Ski Selection	
	ABSS00398 hard	PROLINK SHIFT RACE SK	173, 183								
REDSTER S9	ABSS00522 med	PROLINK SHIFT RACE SK	175, 183, 191	510g / 183cm	42/43/43	Race Carbon Construction	BI 5000 SA + WC Grinding	Innowave Core	-	Atomic Pro Center Ski Selection, Flat Racing Tip (FRT)	
	ABSS00524 hard	PROLINK SHIFT RACE SK	175, 183, 191								

REDSTER C9 SKINTEC

# REDSTER

## Extra rebound, extra power

The new Innowave Core is strong, light and efficient in one. Creating a dynamic rebound with each kick – and extra power with every stride.

## Maximize kick, optimize glide

The Redster C9 Skintec has sections of the ski thicker and denser than others. This race construction delivers max downforce in the kick phase while lifting the skin in your glide for immediate acceleration and more speed on downhill and flats.

## No kick wax, all performance

No prep. Always ready. Performs in any snow. Our famous Skintec technology delivers the feel of a perfectly waxed ski in all conditions, with 100% Mohair skins you can exchange in seconds.



## TECHNICAL SPECIFICATIONS

### RACE

#### REDSTER CLASSIC



REDSTER C9 CARBON NEW ABSS00506 EXCLUSIVE

REDSTER DP NEW ABSS00514



REDSTER C9 NEW ABSS00516 EXCLUSIVE

#### REDSTER SKINTEC



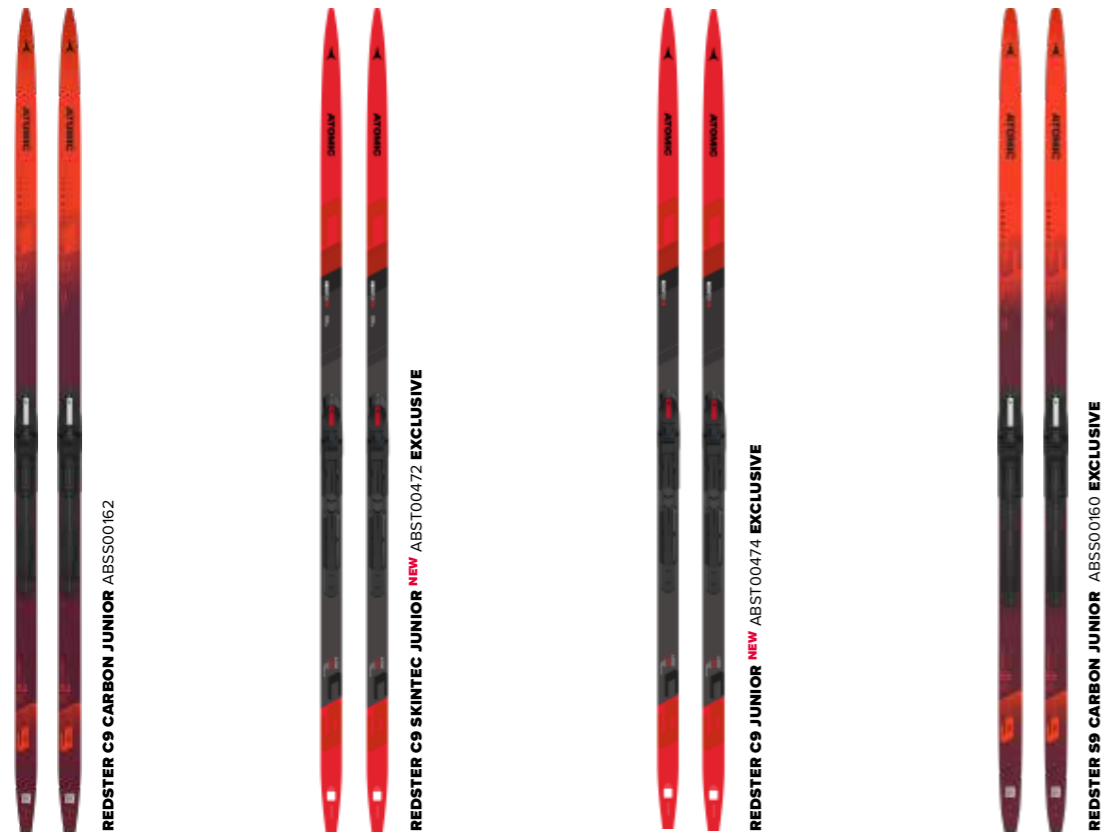
REDSTER C9 SKINTEC NEW ABSS00510 EXCLUSIVE

PRODUCT	ART. NO.	BINDING	SIZES (cm)	WEIGHT SINGLE PC./ SIZE	SIDE CUT(mm)	CONSTR.	BASE	CORE	GRIP	FEATURES	PRICES
	ABSS00496	PROLINK SHIFT RACE CL	197, 207								
	ABSS00506	PROLINK SHIFT RACE CL	187, 197, 202, 207								
	ABSS00504	PROLINK SHIFT RACE CL	187, 197, 202, 207								
	ABSS00556	PROLINK SHIFT RACE CL	197, 202								
	ABSS00494	PROLINK SHIFT RACE CL	197, 207								
	ABSS00502	PROLINK SHIFT RACE CL	197, 207								
<b>REDSTER C9 CARBON</b>	ABSS00558	PROLINK SHIFT RACE CL	197, 207	545g / 202cm	43/44/44	Race Carbon Construction	BI 6000 + WC Grinding	Innowave Core	-	Atomic Pro Center Ski Selection	
	ABSS00498	PROLINK SHIFT RACE CL	197, 207								
	ABSS00490	PROLINK SHIFT RACE CL	197, 207								
	ABSS00560	PROLINK SHIFT RACE CL	197, 207								
	ABSS00500	PROLINK SHIFT RACE CL	197, 207								
	ABSS00492	PROLINK SHIFT RACE CL	197, 207								
<b>REDSTER DP</b>	ABSS00514	PROLINK SHIFT RACE CL	191	520g / 190cm	42/43/43	Race Carbon Construction	BI 6000 + WC Grinding	Innowave Core	-	Atomic Pro Center Ski Selection	
	ABSS00516	PROLINK SHIFT RACE CL	187, 197, 202, 207								
<b>REDSTER C9</b>	ABSS00518	PROLINK SHIFT RACE CL	187, 197, 202, 207	560g / 202cm	43/44/44	Race Carbon Construction	BI 5000 SA + WC Grinding	Innowave Core	-	Atomic Pro Center Ski Selection	
	ABSS00562	PROLINK SHIFT RACE CL	207								
	ABSS00510	PROLINK SHIFT RACE CL	187, 192, 197, 202, 207								
<b>REDSTER C9 SKINTEC</b>	ABSS00508	PROLINK SHIFT RACE CL	187, 192, 197, 202, 207	560g / 197cm	43/44/44	Race Carbon Construction	BI 6000 + WC Grinding	Innowave Core	Skintec	Atomic Pro Center Ski Selection, 100% Mohair, Easy Skin Exchange	
	ABSS00512	PROLINK SHIFT RACE CL	207								

# TECHNICAL SPECIFICATIONS

## RACE

### REDSTER JUNIOR



PRODUCT	ART. NO.	BINDING	SIZES (cm)	WEIGHT SINGLE PC./ SIZE	SIDE CUT(mm)	CONSTR.	BASE	CORE	GRIP	FEATURES	PRICES
<b>REDSTER C9 CARBON JUNIOR</b>	ABSS00162	PROLINK SHIFT CL	157, 162, 167, 172, 177, 182, 187	460g / 167cm	43/44/44	Race Carbon Junior Construction	BI 6000 + WC Grinding	Innowave Core	-	Atomic Pro Center Ski Selection,	
<b>REDSTER C9 SKINTEC JUNIOR</b>	ABSS00472	PROLINK SHIFT JR CL	152, 157, 162, 167, 172, 177, 182, 187	525g / 172cm	43/44/44	Densolite Fiberglass Construction	BI 5000 + Race Grinding	Densolite 500 Skintec	-	100% Mohair, Easy Skin Exchange	
<b>REDSTER C9 JUNIOR</b>	ABSS00474	PROLINK SHIFT JR CL	152, 157, 162, 167, 172, 177, 182, 187	525g / 172cm	43/44/44	Densolite Fiberglass Construction	BI 5000 + Race Grinding	Densolite 500	-		
<b>REDSTER S9 CARBON JUNIOR</b>	ABSS00160	PROLINK SHIFT SK	155, 162, 169, 176	450g / 162cm	44/43/44	Race Carbon Junior Construction	BI 6000 + WC Grinding	Innowave Core	-	Atomic Pro Center Ski Selection,	

# WEIGHT RECOMMENDATION NORDIC SKI

REDSTER SKATE	KG	LBS	KG	LBS	KG	LBS	KG	LBS	KG	LBS	KG	LBS
<b>REDSTER S9 GEN 5</b>	<b>173CM</b>		<b>183CM</b>									
ABSS00396 med + Shift RC SK	50-65	110-143	55-75	121-165	-	-	-	-	-	-	-	-
ABSS00398 hard + Shift RC SK	65-80	143-176	75-95	165-209	-	-	-	-	-	-	-	-
<b>REDSTER S9 CARBON</b>	<b>175CM</b>		<b>183CM</b>		<b>191CM</b>							
ABSS00482 UNI med + Shift RC SK	45-65	99-143	55-75	121-165	65-85	143-187	-	-	-	-	-	-
ABSS00486 UNI hard + Shift RC SK	-	-	75-100	165-220	85-110	187-242	-	-	-	-	-	-
ABSS00488 PLUS med + Shift RC SK	45-65	99-143	55-75	121-165	65-85	143-187	-	-	-	-	-	-
ABSS00484 COLD med + Shift RC SK	45-65	99-143	55-75	121-165	65-85	143-187	-	-	-	-	-	-
<b>REDSTER S9</b>	<b>175CM</b>		<b>183CM</b>		<b>191CM</b>							
ABSS00522 med + Shift RC SK	45-65	99-143	55-75	121-165	65-85	143-187	-	-	-	-	-	-
ABSS00524 hard + Shift RC SK	-	-	75-100	165-220	85-110	187-242	-	-	-	-	-	-
<b>REDSTER CLASSIC</b>	KG	LBS	KG	LBS	KG	LBS	KG	LBS	KG	LBS	KG	LBS
<b>REDSTER C9 SKINTEC</b>	<b>187CM</b>		<b>192CM</b>		<b>197CM</b>		<b>202CM</b>		<b>207CM</b>			
ABSS00510 med + Shift RC CL	50-60	110-132	55-65	121-143	60-70	132-154	70-80	154-176	80-90	176-198	-	-
ABSS00508 hard + Shift RC CL	60-70	132-154	65-75	143-165	70-80	154-176	80-90	176-198	90-100	198-220	-	-
ABSS00512 xhard + Shift RC CL	-	-	-	-	-	-	-	-	100-115	220-253	-	-
<b>REDSTER C9 CARBON</b>	<b>187CM</b>		<b>192CM</b>		<b>197CM</b>		<b>202CM</b>		<b>207CM</b>			
ABSS00496 UNI soft + Shift RC CL	-	-	45-55	99-121	45-55	99-121	55-65	121-143	65-75	143-165	-	-
ABSS00506 UNI med + Shift RC CL	45-55	99-121	55-65	121-143	55-65	121-143	65-75	143-165	75-85	165-187	-	-
ABSS00504 UNI hard + Shift RC CL	-	-	-	-	-	-	75-85	165-187	85-95	187-209	-	-
ABSS00498 COLD soft + Shift RC CL	-	-	40-50	88-110	45-55	88-110	55-65	121-143	65-75	143-165	-	-
ABSS00490 COLD med + Shift RC CL	-	-	-	-	55-65	121-143	65-75	143-165	75-85	165-187	-	-
ABSS00494 PLUS soft + Shift RC CL	-	-	40-50	88-110	45-55	99-121	55-65	121-143	65-75	143-165	-	-
ABSS00502 PLUS med + Shift RC CL	-	-	-	-	55-65	121-143	65-75	143-165	75-85	165-187	-	-
ABSS00500 MULTI soft + Shift RC CL	-	-	40-50	88-110	45-55	88-110	65-75	143-165	65-75	143-165	-	-
ABSS00492 MULTI med + Shift RC CL	-	-	-	-	55-65	121-143	-	-	75-85	165-187	-	-
<b>REDSTER DP</b>	<b>191CM</b>											
ABSS00514 + Shift RC CL	70-90	154-198										
<b>REDSTER C9</b>	<b>187CM</b>		<b>192CM</b>		<b>197CM</b>		<b>202CM</b>		<b>207CM</b>		<b>209CM</b>	
ABSS00516 med + Shift RC CL	55-65	121-143	-	-	60-75	132-165	70-85	154-187	75-90	165-198	-	-
ABSS00518 hard + Shift RC CL	65-80	143-176	-	-	75-90	165-198	80-100	187-220	90-105	198-231	-	-
ABSS00562 xhard + Shift RC CL	-	-	-	-	-	-	-	-	105-120	231-265	-	-
<b>JUNIOR CLASSIC</b>	KG	LBS	KG	LBS	KG	LBS	KG	LBS	KG	LBS	KG	LBS
<b>REDSTER C9 CARBON JUNIOR</b>	<b>157CM</b>		<b>162CM</b>		<b>167CM</b>		<b>172CM</b>		<b>177CM</b>		<b>182CM</b>	
ABSS00162 + Shift CL	25-35	55-77	28-38	62-84	30-40	66-88	32-42	71-93	35-45	77-99	40-50	88-110
	<b>187CM</b>											
	45-55	99-121	-	-	-	-	-	-	-	-	-	-
<b>REDSTER C9 JUNIOR</b>	<b>152CM</b>		<b>157CM</b>		<b>162CM</b>		<b>167CM</b>		<b>172CM</b>		<b>177CM</b>	
ABSS00474 + Shift CL JR	25-35	55-77	25-35	55-77	30-40	66-88	35-45	77-99	40-50	88-110	45-55	99-121
	<b>182CM</b>		<b>187CM</b>									
	45-55	99-121	50-60	110-132	-	-	-	-	-	-	-	-
<b>REDSTER C9 SKINTEC JUNIOR</b>	<b>152CM</b>		<b>157CM</b>		<b>162CM</b>		<b>167CM</b>		<b>172CM</b>		<b>177CM</b>	
ABSS00472 + Shift CL JR	25-35	55-77	25-35	55-77	30-40	66-88	35-45	77-99	40-50	88-110	45-55	99-121
	<b>182CM</b>		<b>187CM</b>									
	45-55	99-121	50-60	110-132	-	-	-	-	-	-	-	-
<b>JUNIOR SKATE</b>	KG	LBS	KG	LBS	KG	LBS	KG	LBS	KG	LBS	KG	LBS
<b>REDSTER S9 CARBON JUNIOR</b>	<b>155CM</b>		<b>162CM</b>		<b>169CM</b>		<b>176CM</b>					
ABSS00160 + Shift SK	30-45	66-99	35-50	77-110	40-55	88-121	45-60	99-132	-	-	-	-

## SKINTEC SKIN

### EASY SKIN EXCHANGE

Adjust your grip and glide. With Atomic Skintec Mohair skins can be easily exchanged in seconds by yourself. We've got a variety of skin options to suit terrain, conditions and how skiers want to ski. For more information on how to exchange skins please visit [atomic.com](https://atomic.com).

	MODEL	PERFORMANCE	BENEFITS - FEATURES
COLD	AL6000118 <b>SKINTEC SPEED SKIN 390 SET</b>	Grip ★★★★★ Glide ★★★★★★ Double poling ★★★★★★	Double poling efficiency – 1 Skintec base adapter Light, robust, smooth – 100% Mohair Faster glide – Special weaving Best gliding from the 1st moment – Special hair preparation Faster glide – Low hair density Faster glide – Long hair length
	AL6000124 <b>SKINTEC SPEED SKIN 390</b>	Grip ★★★★★ Glide ★★★★★★ Double poling ★★★★★★	Light, robust, smooth – 100% Mohair Faster glide – Special weaving Best gliding from the 1st moment – Special hair preparation Faster glide – Low hair density Faster glide – Long hair length
UNIVERSAL	AL6000152 <b>SKINTEC UNIVERSAL SKIN 430</b>	Grip ★★★★★ Glide ★★★★★★ Double poling ★★★★★	Light, robust, smooth – 100% Mohair
	AL6000154 <b>SKINTEC UNIVERSAL SKIN 390</b>		Balanced grip & glide – Medium hair density
	AL6000156 <b>SKINTEC UNIVERSAL SKIN 250</b>		Balanced grip & glide – Medium size hair Avoids icing – Impregnated
	AL6000060 <b>SKINTEC GRIND ADAPTER</b>		

### SKIN COMPATIBILITY RECOMMENDATION CHART

Our Skintec skis are compatible with a variety of skins. The table below has the details.

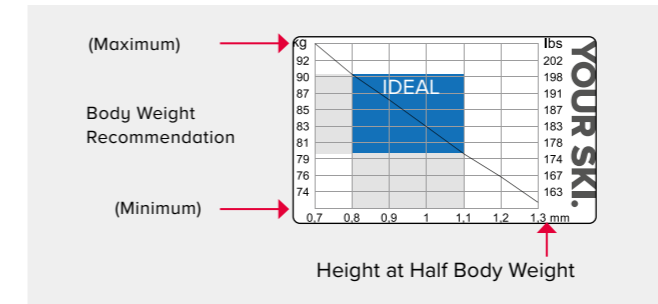
PRODUCT	Grip size	Skintec Speed Skin 390 Set	Skintec Speed Skin 390	Skintec Universal Skin 430	Skintec Universal Skin 390	Skintec Universal Skin 250
<b>SKIN SIZE</b>	430	390*	390	430	390	250
<b>RACE</b>						
<b>REDSTER C9 SKINTEC</b>	390	●	●		●	
<b>JUNIOR</b>						
<b>REDSTER C9 SKINTEC JR (152-182cm)</b>	350					
<b>REDSTER C9 SKINTEC JR (187 cm)</b>	390	●	●		●	

\* with 1 Skintec Base Adapter

## HOW TO SELECT THE PERFECT SKI

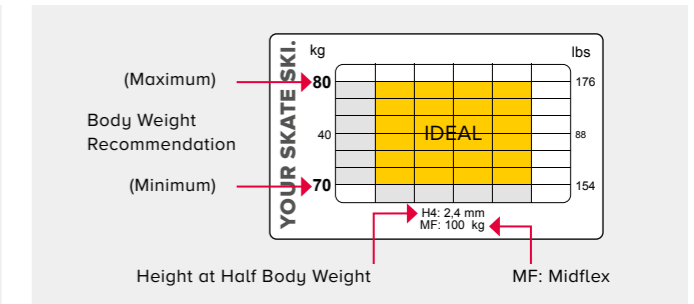
### CLASSIC

This sticker includes a color coding for different conditions: cold (blue ■), universal (yellow ■) or warm (red ■). The sticker shown is for a cold ski which is recommended for skiers between 72 – 94 kg (159 – 207 lbs), perfectly suitable for 80 – 90 kg (176 – 198 lbs). In addition, there's a special sticker for Skintec (color coding grey ■).



### SKATE

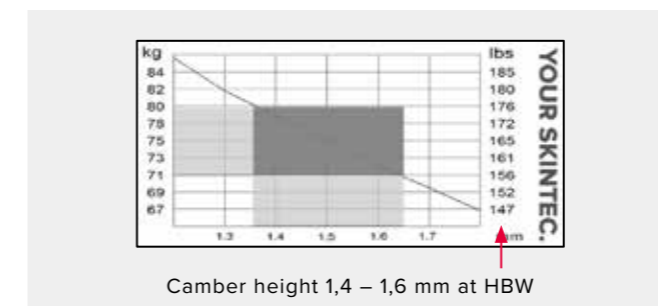
The sticker shown below is for a ski which is recommended for skiers between 70 – 80 kg (154 – 176 lbs).



### CLASSIC SKINTEC SKI

Two values help you select your perfect classic Skintec skis for optimized performance:

- BODY WEIGHT:** The body weight will determine which ski you should choose. See the weight recommendation on the ski sticker and choose the ski with your weight corridor.
- CAMBER HEIGHT:** The camber height is the space between the snow and the ski at half body weight. For the perfect kick and glide properties a certain camber height is needed. See the recommended camber height values for the different ski versions below.



### CHOOSING THE RIGHT SKATE GEN S

The Redster S9 Gen S comes in two flex versions: medium and hard. To find the perfect ski for you, first choose a medium or hard flex. Then select the ski with the correct Midflex for your precise weight, based on our recommended table below:

#### MEDIUM

183CM	55 - 75 KG / MF 55 - 65
173 CM	50 - 65 KG / MF 47 - 57

#### 183CM

SKIERS WEIGHT	
75 KG	MF +/- 65
70 KG	MF +/- 62
65 KG	MF +/- 59
60 KG	MF +/- 56
55 KG	MF +/- 53

#### 173CM

SKIERS WEIGHT	
65 kg	MF +/- 57
60 kg	MF +/- 53
55 kg	MF +/- 50
50 kg	MF +/- 47

#### HARD

183CM	75 - 95 KG / MF 60 - 80
173 CM	65 - 80 KG / MF 57 - 67

#### 183CM

SKIERS WEIGHT	
>95 KG	MF +/- 80
95 KG	MF +/- 75
90 KG	MF +/- 72
85 KG	MF +/- 70
80 KG	MF +/- 67
75 KG	MF +/- 65

#### 173CM

SKIERS WEIGHT	
65 KG	MF +/- 67
60 KG	MF +/- 63
55 KG	MF +/- 60
50 KG	MF +/- 57

### GRINDING FOR DIFFERENT TEMPERATURES AND SNOW CONDITIONS

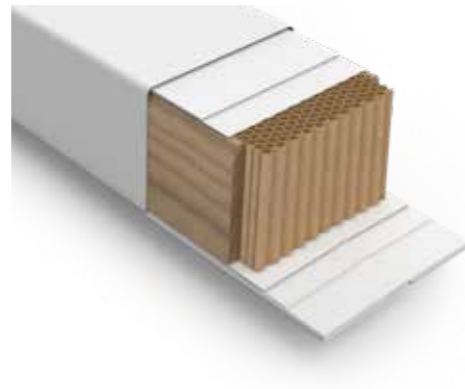
COLD					
STRUCTURE	CL	SK	WHITE BASE	SNOW TEMP	RANGE OF USE
ATOMIC COLD <b>AC3</b>	+	+		-17° to -8°	cold and dry snow
UNIVERSAL					
STRUCTURE	CL	SK	WHITE BASE	SNOW TEMP	RANGE OF USE
ATOMIC MED <b>AM8</b>	o	+	CL + SK	-8° to -1°	universal to warm transformed snow
WARM					
STRUCTURE	CL	SK	WHITE BASE	SNOW TEMP	RANGE OF USE
ATOMIC WET <b>AW9</b>	+	+	CL	-2° to 0°	wet coarse-grained snow (spring snow) + manual structure

+ = very good option / o = possible option

# NORDIC SKI TECHNOLOGY



## CORES



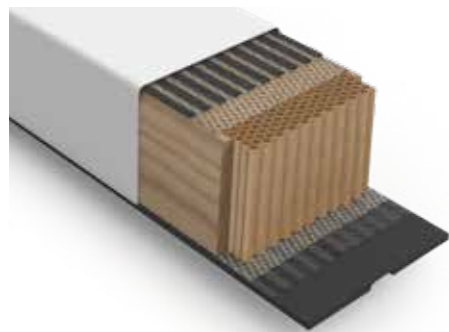
### INNOWAVE CORE

Innovave is the brand-new core material at the heart of our racing skis, engineered and manufactured at our Altenmarkt HQ. The breakthrough innovation is the layered wave pattern that runs along and across the ski. Made from paper and stiffened with resin, this intelligent 'corrugated' design is taking skiing performance to the next level.

### NOMEX CORE

Inspired by aerospace technology, Nomex is the ultralight honeycomb structure at the core of our racing skis. The honeycomb construction is resilient, lively and generates maximum rebound to help racers push their limits.

## CONSTRUCTIONS



### RACE CARBON CONSTRUCTION

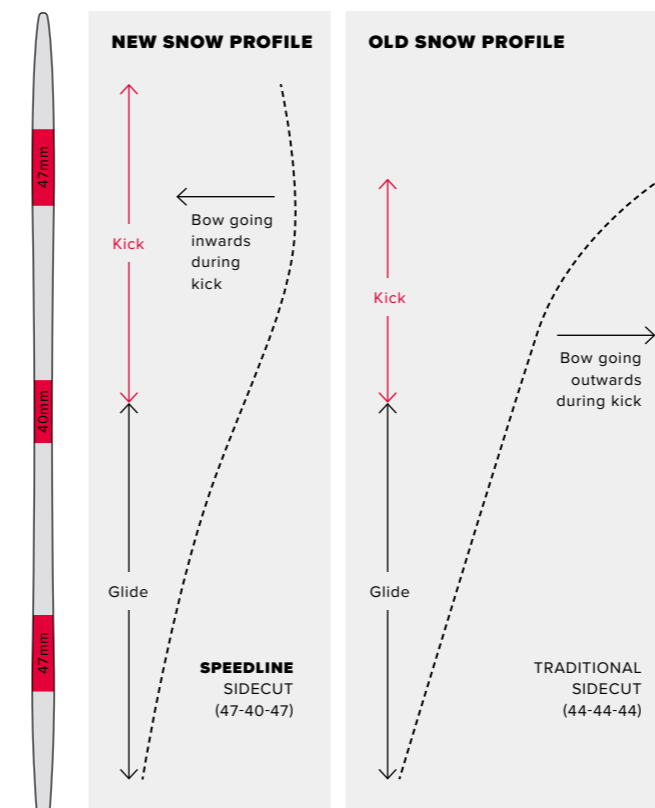
In our Race Carbon Construction, we've added a carbon laminate above and below the Nomex and Innovave core. This gives you extra control and stability at speed. It also creates a stronger rebound for a more powerful and efficient kick.

# REDSTER GEN S

Redster Gen S will revolutionize your cross-country experience from the skate track to the race course.

## SPEEDLINE

Speedline is our new deeper sidecut with a wider tip and tail (47-40-47mm). In the illustration below you can see the difference. The dashed line is the trace the ski leaves in the snow after each step: Speedline makes this trace curve inwards during the kick and keeps the ski moving forwards for longer (left). The result is a more powerful kick and longer stride, which in turn leads to better stability and a big boost to skiing efficiency.

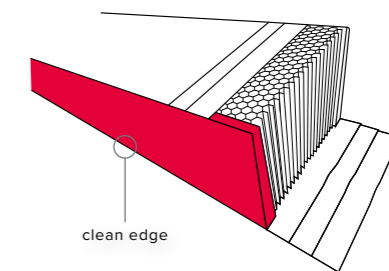


## SPEEDSCALE

Speedscale is the unique Atomic ski geometry that means our skis can be shorter than usual. This boosts precision and makes them more agile and maneuverable than ever before.

## RACEWALL

Racewall, our new sidewall construction, generates an even closer connection between ski edge and snow, meaning more direct power transmission, more stability, and faster skiing.



## ATOMIC PRO CENTER

### ATOMIC PRO CENTER SKI SELECTION

Retailers can now offer the ultimate personalized skis for customers: visit the Atomic Pro Center and choose from the exact same skis as our world-cup athletes, supported by the exact same service team. Select skis to fit an individual customer's profile and get them grinded for their intended snow conditions. Or if you can't come to our Pro Centre in person, our team will find the perfect match on your behalf.



**BORN ON  
THE RACE  
COURSE.**

Simen Hegstad Krüger (NOR)  
3x Gold at World Championships in Planica 2023  
4x Olympic Medals (2018, 2022)

**TECHNICAL SPECIFICATIONS**

**RACE SKATE**



AH5007190  
**PROLINK SHIFT RACE SK**



AH5006990  
**PROLINK RACE SK**

**JUNIOR CLASSIC**



AH5007240  
**PROLINK SHIFT JR CL NEW**

**RACE CLASSIC**



AH5007180  
**PROLINK SHIFT RACE CL**



AH5007000  
**PROLINK RACE CL**

**JUNIOR SKATE**



AH5007250  
**PROLINK SHIFT JR SK NEW**

PRODUCT	ART. NO.	WEDGE ANGLE	WEIGHT (/BIND.)	SYSTEM	AXE TECH.	POWER TRANSMISSION	OPENING CLOSING	FLEX	SHIFT TECHNOLOGY	PRICES
<b>RACE SKATE</b>										
<b>PROLINK SHIFT RACE SK</b>	AH5007190	0.73°	100g	Protlink	1-Axis	Carbon Guideridge	Carbon Race Lever	115	Shift Race Lock, 6-Position Adjustment	
<b>PROLINK RACE SK</b>	AH5006990	0	105g	Protlink	1-Axis	Low Boot-Binding Interface, Compact Engine, Full Contact Engine, Carbon Guideridge	Carbon Race Lever	115	-	
<b>RACE CLASSIC</b>										
<b>PROLINK SHIFT RACE CL</b>	AH5007180	0.73°	100g	Protlink	1-Axis	Carbon Guideridge	Carbon Race Lever	85	Shift Race Lock, 6-Position Adjustment	
<b>PROLINK RACE CL</b>	AH5007000	0	105g	Protlink	1-Axis	Low Boot-Binding Interface, Compact Engine, Full Contact Engine, Carbon Guideridge	Carbon Race Lever	85	-	
<b>JUNIOR CLASSIC</b>										
<b>PROLINK SHIFT JR CL</b>	AH5007240	0.73°	106g	Protlink	1-Axis	Low Boot-Binding Interface	Ergonomic Lever	Junior	Moveable Adjustment, Shift Lock, 6-Position Adjustment	
<b>JUNIOR SKATE</b>										
<b>PROLINK SHIFT JR SK</b>	AH5007250	0.73°	106g	Protlink	1-Axis	Low Boot-Binding Interface	Ergonomic Lever	Junior	Moveable Adjustment, Shift Lock, 6-Position Adjustment	

All bindings are compatible with Protlink, NNN® and Turnamic® boots.



# REDSTER



### World Cup acceleration

The Carbon Power Base is a new outsole handcrafted in Altenmarkt. Constructed from a single piece of carbon and designed with World Cup DNA, it totally surrounds the heel and sole – delivering 100% power transmission and awesome acceleration.

### Wrap your foot perfectly

The low-cut inner construction gives you max freedom of movement for high-performance classic skiing, with an innovative A-Frame lacing system that completely wraps your foot for the perfect foothold.

### Lose the weight, keep the power

The Redster S9 Carbon is the lightest classic boot we've ever made but still exceptionally strong. This delivers great performance and enhanced snow feel in one. A lighter weight that's all benefit and no compromise!

## TECHNICAL SPECIFICATIONS

### RACE SKATE



AI5007790 **EXCLUSIVE**  
**REDSTER S9 CARBON**

AI5007870  
**REDSTER S9**

### RACE CLASSIC



AI5007780 **EXCLUSIVE**  
**REDSTER C9 CARBON**

AI5007890  
**REDSTER C9 NEW**

### JUNIOR



AI5007710  
**REDSTER CS JR**

PRODUCT	ART. NO.	WEIGHT / BOOT (SAMPLE SIZE)	SIZES (UK)	FIT / LAST	FLEX	OUTSOLE	LACING	CUFF	HEEL	PROTECTION	INNER BOOT CONSTR.	PRICES
<b>RACE</b>												
<b>REDSTER S9 CARBON</b>	AI5007790	460g / UK8	4.5 - 12	Race Fit	Skating Flex	Prolink Racing Split Sole SK	-	Carbon Cuff	Carbon Power Base SK	-	Low Cut	
<b>REDSTER S9</b>	AI5007870	530g / UK8	3.5 - 12	Race Fit	Skating Flex	Prolink Racing Split Sole SK	3D Race Lacing System, Quicklace	Carbon Loaded Cuff	Carbon Power Base SK	Lace Cover with Central Zip	Low Cut	
<b>REDSTER C9 CARBON</b>	AI5007780	340g / UK8	4.5 - 12	Race Fit	Classic Flex	Prolink Racing Split Sole SK	3D Race Lacing System	-	Carbon Power Base CL	-	Low Cut	
<b>REDSTER C9</b>	AI5007890	400g / UK8	4.5 - 12.5	Race Fit	Classic Flex	Prolink Racing CL	3D Race Lacing System	-	Carbon-Loaded Heel Counter	Lace Cover with Central Zip	Low Cut	
<b>JUNIOR</b>												
<b>REDSTER CS JR</b>	AI5007710	415g / UK 4	1 - 8	Junior Fit	Combi Flex	Prolink Sport CL	Standard Lacing	Rotative Sport Cuff	External 3D Heel Counter Heel Strap (adjustable) Heel Foam Liner	Lace Cover with Central Zip		



**REDSTER WC QRS** AJ5005806  
RED / CARBON

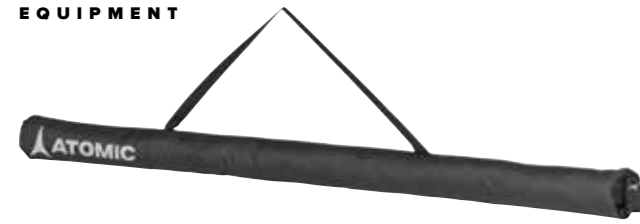
**REDSTER ULTRA QRS** AJ5005808  
BLACK / CARBON

**REDSTER CARBON QRS** AJ5005810  
RED / CARBON

PRODUCT	ART. NO.	COLOR	SIZES (cm)	SHAFT	GRIP	STRAP	BASKET	TIP	WEIGHT	PRICES
<b>RACE</b>										
<b>REDSTER WC QRS</b>	AJ5005806	Red / Carbon	140, 150, 55, 160, 165, 170, 180	100% Carbon WC	QRS - Quick Release System, QRS Nordic Cork Grip (2K)	Power Strap WC	Racing Basket Size M	Wolfram Tip	125g / 150cm	
<b>REDSTER ULTRA QRS</b>	AJ5005808	Black / Carbon	130, 135, 140, 145, 150, 155, 160, 165, 170	100% Carbon Ultra	QRS - Quick Release System, QRS Nordic Cork Grip (2K)	Power Strap Ultra	Racing Basket Size M	Wolfram Tip	145g / 155cm	
<b>REDSTER CARBON QRS</b>	AJ5005810	Red / Carbon	130, 135, 140, 145, 150, 155, 160, 165, 170	100% Carbon	QRS - Quick Release System, QRS Nordic Cork Grip (2K)	Power Strap Ultra	Exchangeable Basket	Wolfram Tip	165g / 155cm	

# TECHNICAL SPECIFICATIONS

## EQUIPMENT



AL5048210  
**NORDIC A SLEEVE**  
BLACK



AL5048310  
**NORDIC SKI SLEEVE**  
RED / RIO RED



AL5048320  
**NORDIC SKI SLEEVE**  
BLACK / BLACK



AL5048410  
**NORDIC SKI BAG 3 PAIRS**  
BLACK / BLACK



AL5044410  
**NORDIC 10 PAIRS SKIBAG**  
BLACK



**NORDIC THERMO BOTTLE BELT**  
AL5050210 BLACK / GREY  
AL5050220 RED

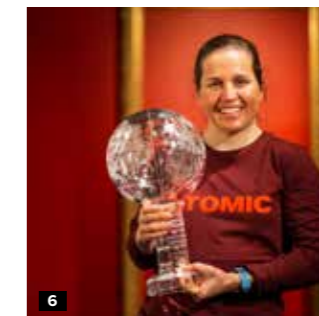
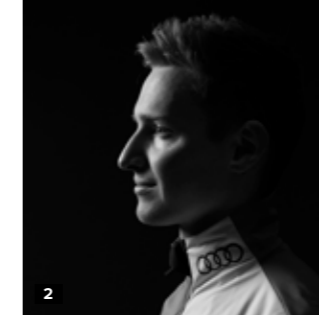


AL5046210  
**NORDIC REDSTER SKIFIX 10 PCS**  
BLACK

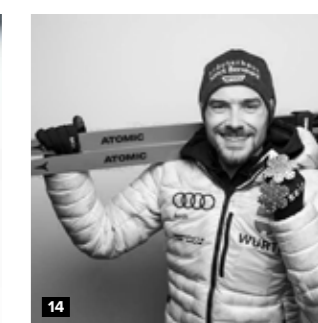
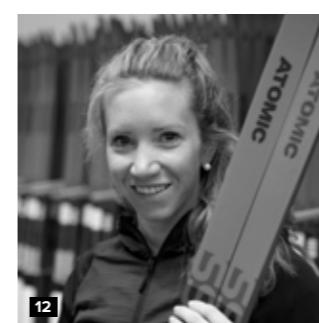


AL5049310  
**NORDIC SKI FIX 10 PCS**  
BLACK

PRODUCT	ART. NO.	COLOR	DIMENSIONS (H x L x W) (cm)	WEIGHT	FABRIC	FEATURES	PRICES
<b>NORDIC A SLEEVE</b>	AL5048210	Black	233x19x1	230g	500D PE with PU Coating	Shoulder Strap, Adjustable Length, Length Adjustment: Rolltop	
<b>NORDIC SKI SLEEVE</b>	AL5048310 AL5048320	Red / Rio Red Black / Black	233x19x2	290g	600D PE with PU Coating, 500D PE with PU Coating, PVC free, Water- and Stain-resistant	Zippered Side Opening, Side Handle, Adjustable Shoulder Strap, Adjustable Length, Length Adjustment: Rolltop	
<b>NORDIC SKI BAG 3 PAIRS</b>	AL5048410	Black / Black	max. 215x18x14cm	1015g	Tarpaulin Lining, 600D PE with PU Coating, 500D PE with PU Coating, PVC free, Water- and Stain-resistant	Easy-Access Main Compartment, Top Handle, Side Handle, Adjustable Shoulder Strap, Ventilation Grid, Fully Padded, Adjustable Length, Length Adjustment: Zipper, Easy Cleaning Tarpaulin Lining	
<b>NORDIC 10 PAIRS SKIBAG</b>	AL5044410	Black	215x25x40cm	2500g	Tarpaulin Lining, 150D PE with PU*2 Coating, 600D Poly with PU Coating, PVC free	Easy-Access Main Compartment, Top Handle, External Compression Straps, Padded Shoulder Straps, Adjustable Shoulder Strap, Fully Padded, Durable	
<b>NORDIC THERMO BOTTLE BELT</b>	AL5050210 AL5050220	Black / Grey Red	50x25x12	280g	Lite Ripstop PA with TPU Coating	Roll Top Volume Adjustment, Thermo Insulation for Bottle, Hip Belt with Accessory Pocket, Front Accessory Pocket, Lightweight, Bottle with Push/Pull Opening	
<b>NORDIC REDSTER SKIFIX 10 PCS</b>	AL5046210	Black	14x5.5x3.5	10g			
<b>NORDIC SKI FIX 10 PCS</b>	AL5049310	Black	26x4.5x1	6g			



# BORN ON THE RACE COURSE.



1 Hugo Lapalus 2 Manuel Faißt 3 Stefan Rettenegger 4 Simon Eder 5 Simen Hegstad Krüger  
6 Tiril Udnes Weng 7 Lotta Udnes Weng 8 Victoria Carl 9 Anne Kjersti Kalvå 10 Johanna Hagström  
11 Franz-Josef Rehr 12 Elisa Gasparin 13 Julia Kern 14 Fabian Rießle

